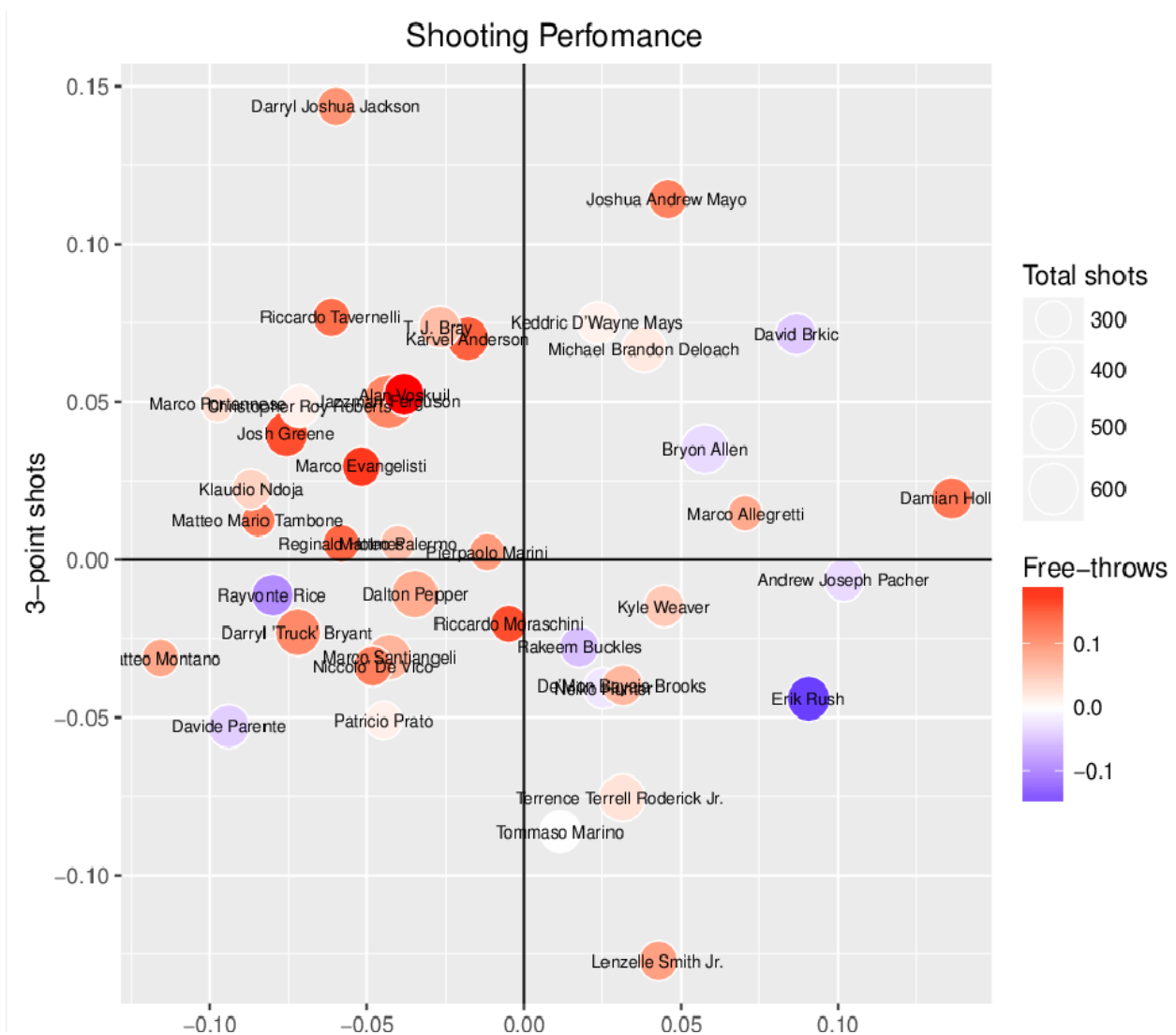


Bubble graphs describing players' and teams' shooting performance

Figure 3a: These graphs are obtained by analyzing the data deriving from the play-by-play records of all the matches played during the Italian "Serie A2" Championship 2015/2016 (that constitutes the second-tier of the Italian league pyramid, just below the first division "Serie A", and is the highest Italian non-professional competition level). The datasets are obtained by extracting, from play-by-play data, all the attempted shots, described according to all the information that can be extrapolated from such data (e.g. the player, the time, the shot clock, the score, ...). This Figure investigates the players' shooting performance (computed according to Zuccolotto et al., 2017): each player is represented as a bubble with the size proportional to the total number of attempted shots. Each bubble is located in the plane with 2-point shot performance on the x-axis and 3-point shot performance on the y-axis. The color represents the performance on free throws, according to the blue-red scale reported in the graph. Such performance measures are related to the player's scoring probability and the circumstances under which each shot has been attempted: a basket is worth more when the scoring probability of that type of shot in a certain situation is low (for example, for free throws the scoring probability is lower when the previous shot was missed). For example, Darryl Joshua Jackson performed very well in 3-point shots and free-throws, while his performance in 2-point shots is not so good. Only players who attempted at least 70 shots for each shot type are displayed.



Analyses carried out by BDsports (all rights reserved)

Figure 3b: This Figure investigates the teams' shooting performance, computed averaging over each team's players (top panel: first 15 matches of the championship, bottom panel: second 15 matches). Each team is represented as a bubble with the size proportional to the total number of attempted shots. Each bubble is located in the plane with 2-point shot performance on the x-axis and 3-point shot performance on the y-axis. The color represents the performance on free throws, according to the blue-red scale reported in the graph.

